

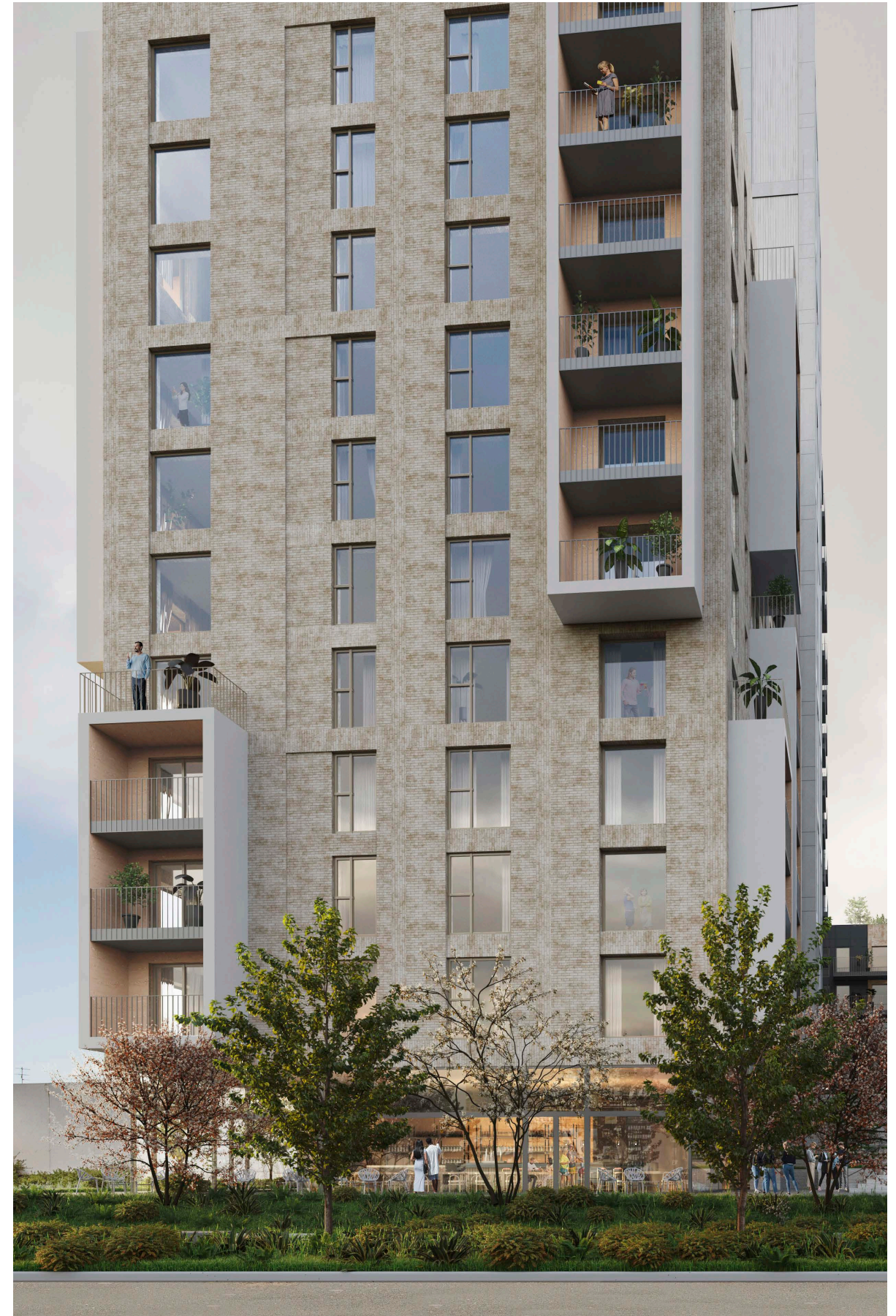
APPENDIX 13.1

Photomontages

Carmanhall Road Development

Method Statement Photo-montage production.

1. Photographs are taken from locations as advised by client with a full frame SLR digital camera and prime lens. The photographs are taken horizontally with a survey level attached to the camera. The photographic positions are marked (for later surveying), the height of the camera and the focal length of the image recorded.
2. In each photograph, a minimum of 3no. visible fixed points are marked for surveying. These are control points for model alignment within the photograph. All surveying is carried out by a qualified topographical surveyor using Total Station / GPS devices.
3. The photographic positions and the control points are geographically surveyed and this survey is tied in to the site topographical survey supplied by the Architect / client.
4. The buildings are accurately modelled in 3D cad software from cad drawings supplied by the Architect. Material finishes are applied to the 3D model and scene element are place like trees and planting to represent the proposed landscaping.
5. Virtual 3D cameras are positioned according to the survey co-ordinates and the focal length is set to match the photograph. Pitch and rotation are adjusted using the survey control points to align the virtual camera to the photograph. Lighting is set to match the time of day the photograph is taken.
6. The proposed development is output from the 3D software using this camera and the image is then blended with the original photograph to give an accurate image of what the proposed development will look like in its proposed setting.
7. In the event of the development not being visible, the roof line of the development will be outlined in red if re-quested.
8. The document contains:
 - a) Site location map with view locations plotted.
 - b) Photo-montage sheet with existing or proposed conditions.
 - c) Reference information including field of view/focal length, range to site / development, date of photograph.
9. The proposed view will contain the building where visible or partially visible. Where the building





Location Map



Location Map



Location	Date	Field of view	35mm equivalent	Distance to site	Camera model
View 1 Existing	02-03-2020	54°	35mm	250m	Canon EOS 5DS



Location	Date	Field of view	35mm equivalent	Distance to site	Camera model
View 1 Proposed	02-03-2020	54°	35mm	250m	Canon EOS 5DS



Location	Date	Field of view	35mm equivalent	Distance to site	Camera model
View 2 Existing	02-03-2020	96°	16mm	75.2m	Canon EOS 5DS



Location	Date	Field of view	35mm equivalent	Distance to site	Camera model
View 2 Proposed	02-03-2020	96°	16mm	75.2m	Canon EOS 5DS



Location	Date	Field of view	35mm equivalent	Distance to site	Camera model
View 3 Existing	02-03-2020	96°	16mm	60.6m	Canon EOS 5DS



Location	Date	Field of view	35mm equivalent	Distance to site	Camera model
View 3 Proposed	02-03-2020	96°	16mm	60.6 m	Canon EOS 5DS



Location	Date	Field of view	35mm equivalent	Distance to site	Camera model
View 4 Existing	02-03-2020	54°	35mm	153.5m	Canon EOS 5DS



Location	Date	Field of view	35mm equivalent	Distance to site	Camera model
View 4 Proposed	02-03-2020	54°	35mm	153.5m	Canon EOS 5DS



Location	Date	Field of view	35mm equivalent	Distance to site	Camera model
View 5 Existing	02-03-2020	93°	17mm	77.5m	Canon EOS 5DS



Location	Date	Field of view	35mm equivalent	Distance to site	Camera model
View 5 Proposed	02-03-2020	93°	17mm	77.5m	Canon EOS 5DS



Location	Date	Field of view	35mm equivalent	Distance to site	Camera model
View 6 Existing	02-03-2020	93°	17mm	15m	Canon EOS 5DS



Location	Date	Field of view	35mm equivalent	Distance to site	Camera model
View 6 Proposed	02-03-2020	93°	17mm	15m	Canon EOS 5DS



Location	Date	Field of view	35mm equivalent	Distance to site	Camera model
View 7 Existing	21-05-2020	54°	35mm	798.5m	Canon EOS 5DS



Location	Date	Field of view	35mm equivalent	Distance to site	Camera model
View 7 Proposed	21-05-2020	54°	35mm	798.5m	Canon EOS 5DS



Location	Date	Field of view	35mm equivalent	Distance to site	Camera model
View 8 Existing	21-05-2020	54°	35mm	899.3m	Canon EOS 5DS



Location	Date	Field of view	35mm equivalent	Distance to site	Camera model
View 8 Proposed	21-05-2020	54°	35mm	899.3m	Canon EOS 5DS



Location	Date	Field of view	35mm equivalent	Distance to site	Camera model
View 9 Existing	21-05-2020	54°	35mm	809.7m	Canon EOS 5DS



Location	Date	Field of view	35mm equivalent	Distance to site	Camera model
View 9 Proposed	21-05-2020	54°	35mm	809.7m	Canon EOS 5DS



Location	Date	Field of view	35mm equivalent	Distance to site	Camera model
View 10 Existing	21-05-2020	54°	35mm	255.3m	Canon EOS 5DS



Location	Date	Field of view	35mm equivalent	Distance to site	Camera model
View 10 Proposed	21-05-2020	54°	35mm	255.3m	Canon EOS 5DS



Location	Date	Field of view	35mm equivalent	Distance to site	Camera model
View 11 Existing	21-05-2020	76°	23mm	300.3m	Canon EOS 5DS



Location	Date	Field of view	35mm equivalent	Distance to site	Camera model
View 11 Proposed	21-05-2020	76°	23mm	300.3m	Canon EOS 5DS



Location	Date	Field of view	35mm equivalent	Distance to site	Camera model
View 12 Existing	21-05-2020	54°	35mm	509.2m	Canon EOS 5DS



Location	Date	Field of view	35mm equivalent	Distance to site	Camera model
View 12 Proposed	21-05-2020	54°	35mm	509.2m	Canon EOS 5DS



Location	Date	Field of view	35mm equivalent	Distance to site	Camera model
View 13 Existing	14-01-2021	73°	24mm	2317m	Canon EOS 5DS



Location	Date	Field of view	35mm equivalent	Distance to site	Camera model
View 13 Proposed	14-01-2021	73°	24mm	2317m	Canon EOS 5DS



Location	Date	Field of view	35mm equivalent	Distance to site	Camera model
View 14 Existing	14-01-2021	54°	24mm	2568m	Canon EOS 5DS



Location	Date	Field of view	35mm equivalent	Distance to site	Camera model
View 14 Proposed	14-01-2021	54°	24mm	2568m	Canon EOS 5DS